

Zire™ 71



Read This First

START HERE

Here's what you'll do:

- Charge and set up your Palm™ Zire™ 71 handheld.
- Install Palm™ Desktop software.
- Learn to use your handheld.

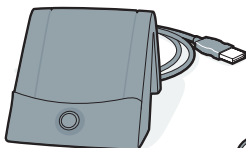
Important! Already use a Palm™ handheld?

- Synchronize your old handheld with your computer so that the information is up-to-date.
- Go to www.palm.com/support/globalsupport to learn how to smoothly transfer your information to your new handheld.

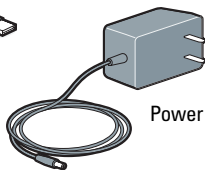
Contents



Palm™ Zire 71™ handheld



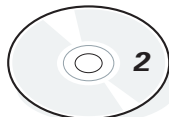
USB HotSync® cradle



Power adapter



Palm™ Desktop software CD-ROM



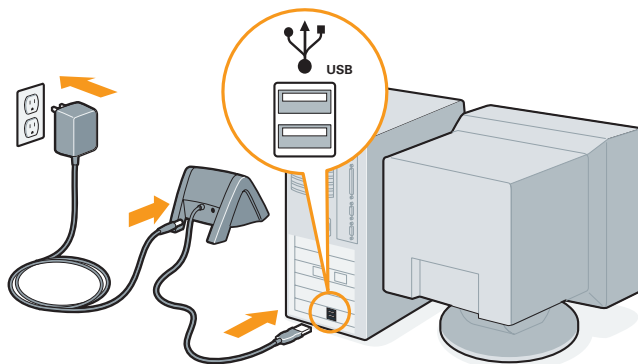
Software Essentials CD-ROM

1

Connect

- a. Connect the HotSync® cradle to the computer.*
- b. Connect the adapter to the cradle.
- c. Plug the adapter into an outlet

NOTE: On some cradles, the adapter cable may plug into a tail on the back of the USB connector instead of the back of the cradle.

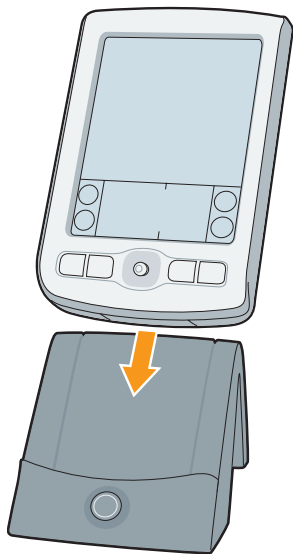


* Windows NT systems and systems without USB ports require a serial cradle, sold separately.

2

Charge

- a. Place your Zire™ 71 handheld into the cradle.
- b. Charge for at least two hours.

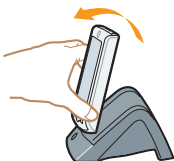


3

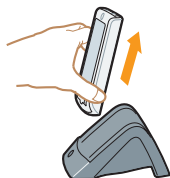
Set up

a. Remove the handheld from the cradle.

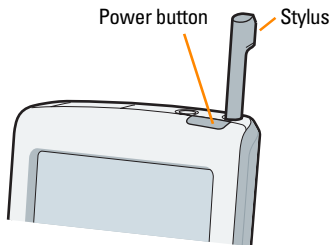
1. Tilt it forward.



2. Lift up.

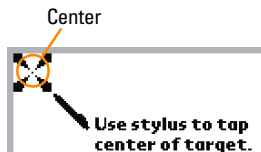


b. Turn on the handheld by pressing the power button.*



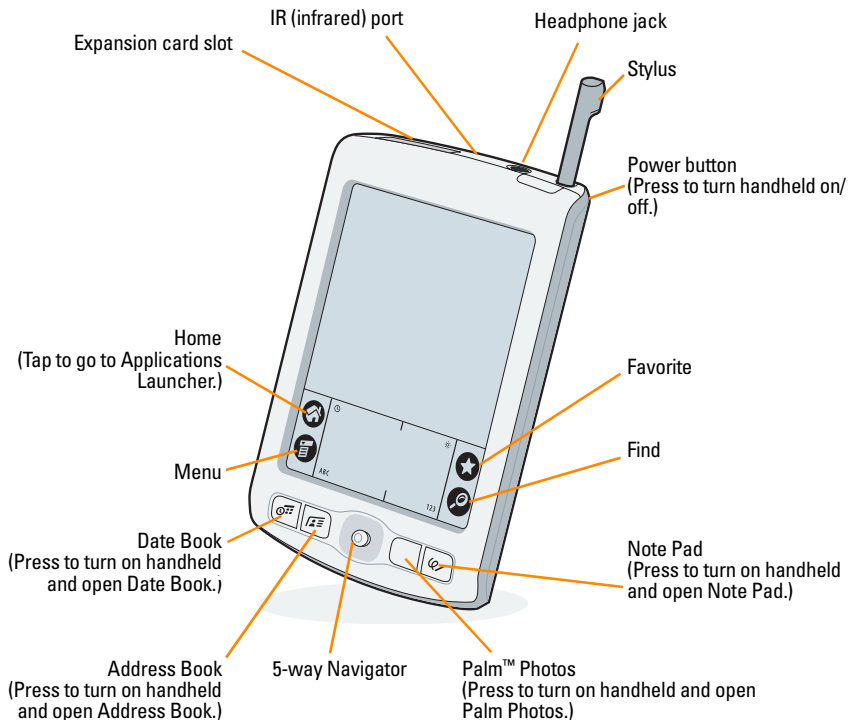
c. Remove the stylus: Slide the stylus out of the slot.

d. Follow the Setup instructions on the screen.



e. Tap firmly the center of at least 3 targets.

* Problems? See the *“Troubleshooting”* section in the upcoming pages.



TIP: To access the camera shutter button, camera lens, and reset button, open the camera as described in **“Take a photo on your handheld”** section in the upcoming pages.

4

Install Palm™ Desktop software on your computer

Enter appointments, addresses, and other information using Palm Desktop software. Then transfer the information to your handheld using the HotSync process. It's the fastest way to enter lots of information.

NOTE: You must install the version of Palm Desktop software included in this package.


- a. Put the Palm Desktop software CD-ROM in the CD-ROM drive.

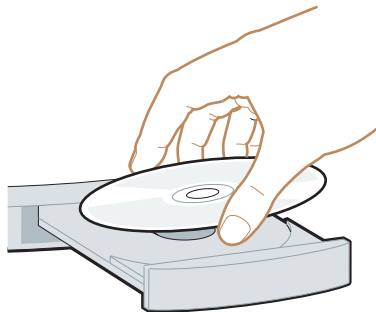
Windows:

- b. Follow the installation instructions that appear on your computer screen.*

Mac:

- b. Double-click the Palm Desktop Installer icon.*

- c. After you complete the installation, tap Home  to open the Applications Launcher.



* *Problems? If installation or the HotSync process did not work, see “Troubleshooting” section in the upcoming pages.*

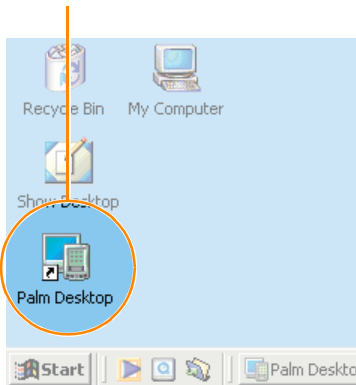
ENTER AND SYNCHRONIZE YOUR INFORMATION

5

Try it! Schedule an appointment on your computer

Windows:

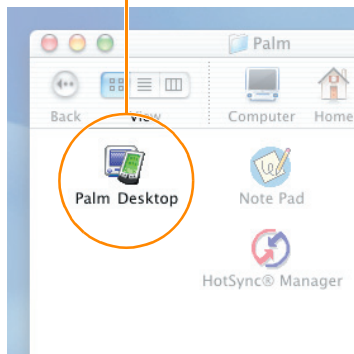
- a. Double-click the Palm Desktop icon on your computer desktop.



- b. In Palm™ Desktop software, click New Event in the lower-left corner.
- c. Enter the appointment, and then click OK to save it.

Mac:

- a. In the Palm folder, double-click the Palm Desktop icon.

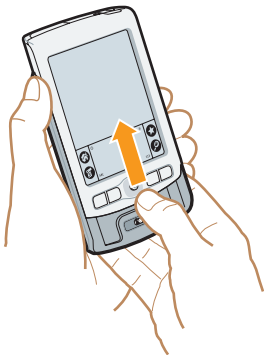


- b. Create or select a username to identify your information.
- c. From the Create menu, select Event.
- d. Enter the appointment, and then click OK to save it.

6

Take a photo on your handheld

- a. Open the camera: Rest the tip of your thumb below the 5-way navigator and push the bottom of the front plate of your handheld upward about half an inch.



- b. Aim the lens on the back of your handheld at the photo subject to preview the photo on the screen.

- c. Press the camera shutter button.



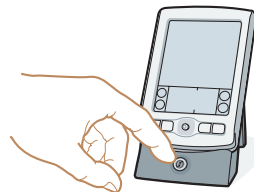
- d. Close the camera: Slide the top portion of your handheld downward.

7

Synchronize information on your handheld and computer

In this step, the HotSync® process synchronizes information on your handheld and in Palm™ Desktop software, so that information you enter in one appears in both places.

- a. Place the handheld in the cradle.
- b. Press the button on the cradle to begin the HotSync process.*
- c. When the HotSync process is complete, check your handheld and computer to see the information in both places.

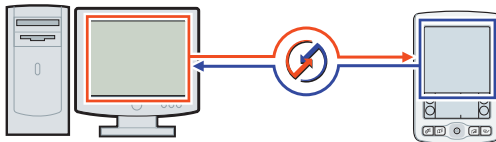


Windows:

Look for the appointment and photo in Palm Desktop software.

Mac:

- Look for the appointment in Palm Desktop software.
- Look for the photo in the Home/Pictures/Palm Photos/<Username>/Handheld folder (Mac OS X) or in the Documents/Palm Photos/<Username>/Handheld folder (Mac OS 9).



HotSync process

* Problems? If the HotSync process did not work, see *"Troubleshooting"* section in the upcoming pages.

GET MORE OUT OF YOUR HANDHELD

Software Essentials

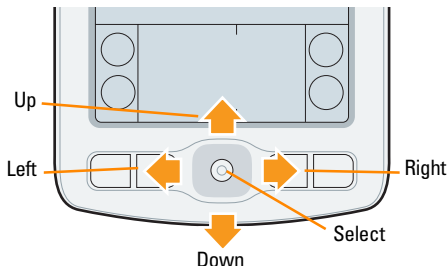
Insert the Software Essentials CD into the CD-ROM drive to install software that enables you to listen to MP3 files (expansion card required, sold separately), watch short video clips, play games, exchange e-mail (optional remote access requires an ISP and a compatible mobile phone or modem, not included), and more.

NOTE: You may need to download software from the Internet while installing some applications from the Software Essentials CD-ROM.

Use the 5-way navigator

Use the 5-way navigator for quick access to your information. To learn more about the navigator, take the Quick Tour.

- In lists, press Select to insert a highlight and Left to remove the highlight.
- In most screens, press Select to view the highlighted item, or press and hold Select to go to the Applications Launcher.
- In dialog boxes with two or more buttons, press Select for OK, Done, or Yes.
- In Date Book, select an event or view notes.
- In Address Book, use Quick Lookup.
- In Palm™ Photos, select and view a photo.
- In Note Pad, move between records.
- In Memo Pad, select and view a record.



Palm™ Quick Install (Windows only)



Use any of the following methods to install applications and files:

- Drag and drop files onto the Palm Quick Install icon.
- Open the Palm Quick Install window and drag and drop files, or click the Add button to select files.
- Right-click a file, select Send To, and then click Palm Quick Install.



Take the Quick Tour

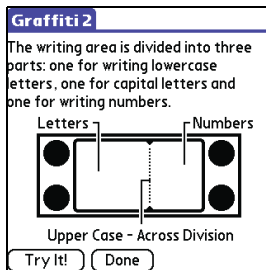
The Quick Tour is installed after the first HotSync® process. The Quick Tour is an overview of the features of your Zire™ 71 handheld.

- Turn on your handheld, tap Home , and tap the Quick Tour icon .

Learn Graffiti® 2 writing

Graffiti® 2 software powered by CIC® Jot® is a fast and simple way to enter text and numbers into your handheld. Take this hands-on tutorial to see simple strokes turn into text and numbers on your screen.

- Turn on your handheld, tap Home , and tap the Graffiti 2 icon .

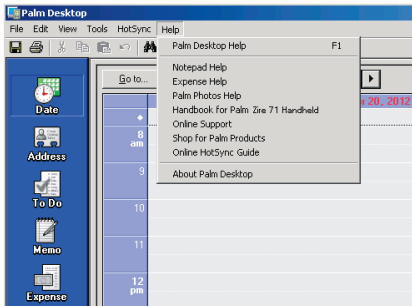


Read the Handbook

The Zire 71 *Handbook* is located in the Palm™ Desktop software CD-ROM. The Zire 71 Handbook opens in Adobe Acrobat Reader on your computer. If you do not have Acrobat Reader, you can install it from the Palm™ Desktop software CD-ROM.

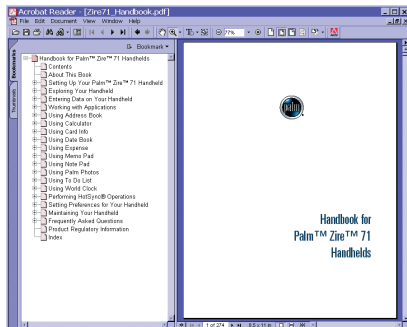
Windows:

In Palm Desktop software, click Help in the menu bar. Then select the menu item for the Zire 71 *Handbook*.



Mac:


Look in the Applications/Palm/Documentation folder, and double-click Zire71 Handbook.pdf.

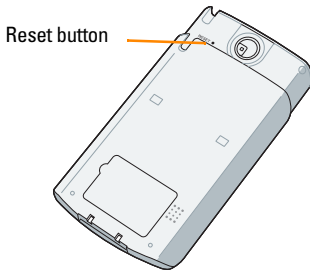


Visit www.palm.com/intl to learn more about your handheld.

TROUBLESHOOTING

Your handheld does not turn on when you press the power button

- a. Press any application button to ensure your handheld is turned on.
- b. Perform a soft reset:
 1. Slide the bottom portion of your handheld upward to open the camera.
 2. Use the tip of an unfolded paper clip (or similar object without a sharp tip) to gently press the reset button inside the hole on the back panel of your handheld.
- c. Make sure your handheld is charging and then charge it for another full two hours:
 1. Place your handheld in the cradle.
 2. Press the power button.
 3. Tap Home .
 4. Look for a lightning bolt on the battery icon at the top of the screen.
 5. If you do not see the lightning bolt, reseal your handheld in the cradle and check the cable and power adapter connections.



Third-party applications

Some third-party applications may not have been upgraded to be compatible with your new Palm™ handheld. If you suspect that a third-party application is affecting the operation of your handheld, contact the developer of the application.

Palm™ Desktop Installer does not automatically appear after you put the CD-ROM into the drive

Windows:

- a. Click the Start button.
- b. Select Run from the Start menu.
- c. Click Browse to locate the drive with the Palm Desktop software CD-ROM.
- d. Double-click the autorun.exe file on the Palm Desktop software CD-ROM.

Mac:

- a. Double-click the CD-ROM icon on the Mac desktop to open the Palm Desktop software CD-ROM.
- b. Double-click the Palm Desktop Installer icon.

HotSync® process does not begin

Check that the handheld is properly seated in the cradle and that the cradle connector is securely connected to the computer.

Windows:

- a. Make sure the HotSync icon appears in the Windows system tray. If not:

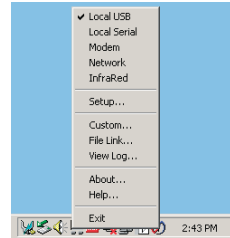
1. Click the Start button and select Programs.
2. Select Palm Desktop, and then select HotSync Manager.

HotSync icon



- b. Check the connection type:

1. Click the HotSync icon.
2. Make sure there is a check mark next to Local USB (or Local Serial if using a serial connection). To insert a check mark, click the menu item.



Mac:

- a. Make sure the Transport Monitor of the HotSync Manager is enabled:
1. Double-click the HotSync Manager icon in the Palm folder.
 2. In the HotSync Controls tab, click Enabled.
- b. If you are using a USB cradle:
1. Disconnect and then reconnect the cradle.
 2. Restart your computer.
- c. If you are using a serial cradle (sold separately):
1. Double-click the HotSync Manager icon in the Palm folder.
 2. In the Connection Settings tab, select PalmConnect and the port where the HotSync cradle is connected.

Copyright

© 2003 Palm, Inc. All rights reserved. Graffiti, HotSync, the Palm logo, and the Palm Powered logo are registered trademarks of Palm, Inc. The HotSync logo, Palm, and Zire are trademarks of Palm, Inc. Jot and CIC are registered trademarks of Computer Intelligence Corporation. Other product and brand names may be trademarks or registered trademarks of their respective owners.

Disclaimer and Limitation of Liability

Palm, Inc. assumes no responsibility for any damage or loss resulting from the use of this guide. Palm, Inc. assumes no responsibility for any loss or claims by third parties which may arise through use of this software. Palm, Inc. assumes no responsibility for any damage or loss caused by deletion of data as a result of malfunction, dead battery, or repairs. Be sure to make backup copies of all important data on other media to protect against data loss.

Software Download Available

Palm™ Desktop software is supplied on a CD-ROM disc. Check www.palm.com/intl for updates and new versions of the software.

Agency Compliance Information

Product regulatory and compliance information can be found in the Handbook file located on the product CD-ROM.

Palm, Inc.
400 N. McCarthy Boulevard
Milpitas, CA 95035
USA
www.palm.com/intl



PN: 407-4783A-IE