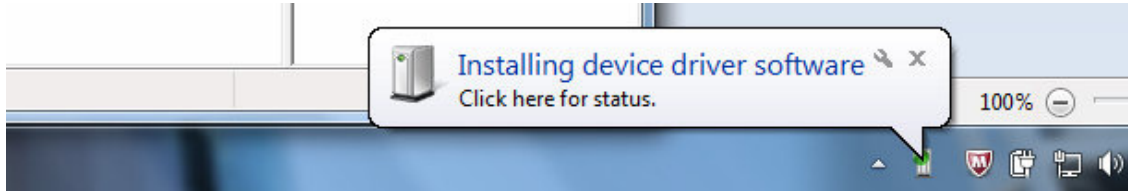
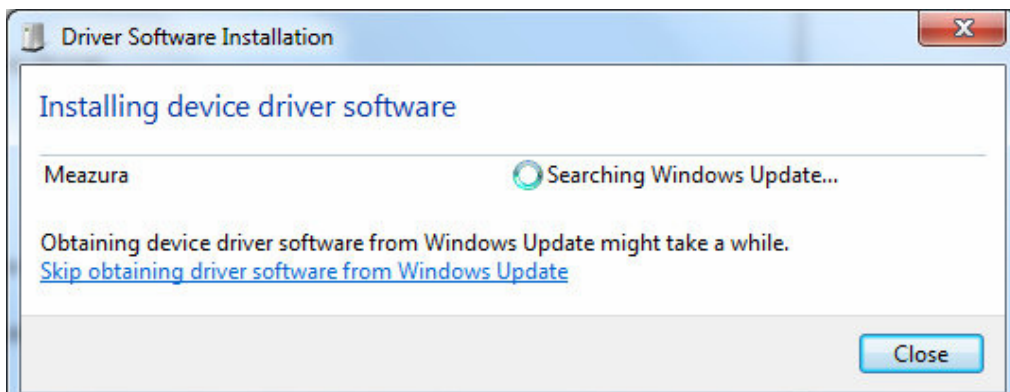


**INTRODUCTION:**

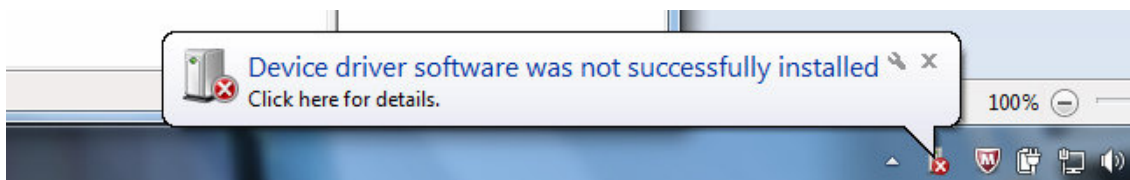
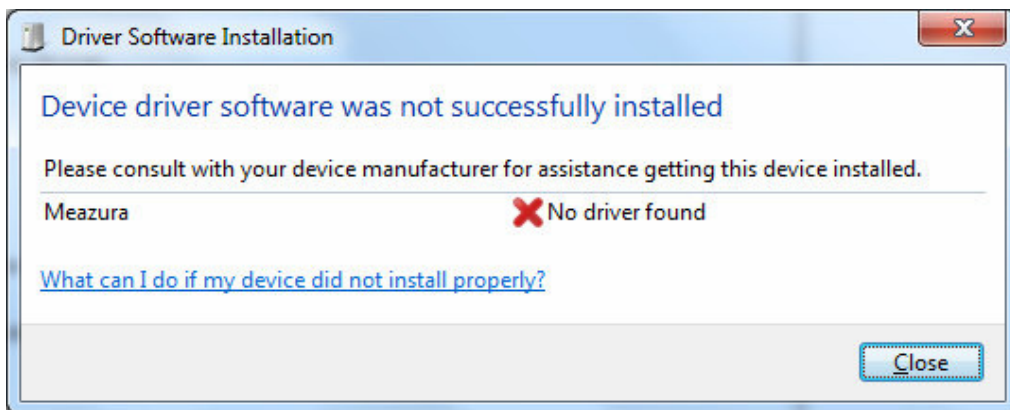
When you first try to Hotsync an ACEECA Palm OS 4.x or Garnet OS 5.x device on your Windows 7 64-bit PC you will get this prompt:



If you click on this status bubble you will see this dialog box:

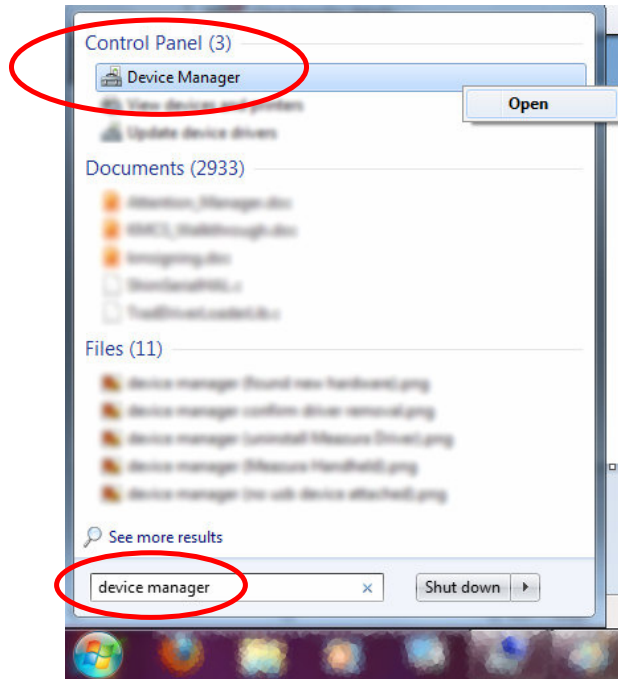


Windows is searching for the appropriate driver using 'Windows Update', which is the default behavior for a typical Windows 7 installation. However this process will fail because ACEECA has proprietary OEM drivers that aren't recognized by 'Windows Update'. You will instead see this dialogue and error bubble:

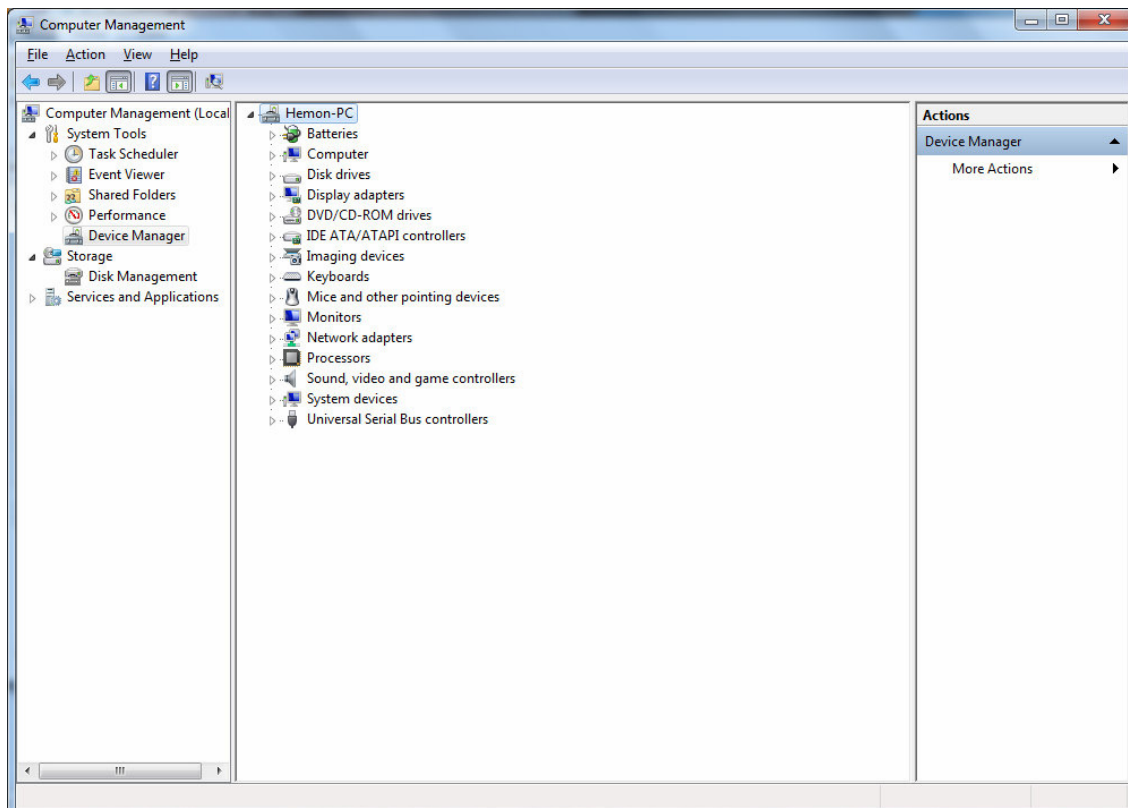


**INSTALLATION PROCEDURE:**

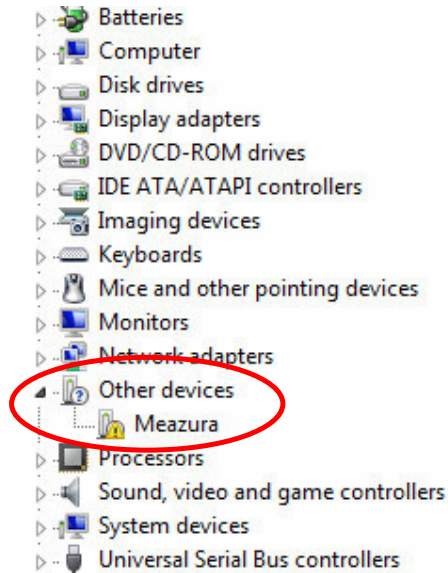
- 1) Launch the 'Device Manager' application. This can be done by clicking on the 'Windows' icon at the bottom left of the screen and typing 'Device Manager' in the search box. Click on the 'Device Manager' application in the 'Control Panel' section as shown below.



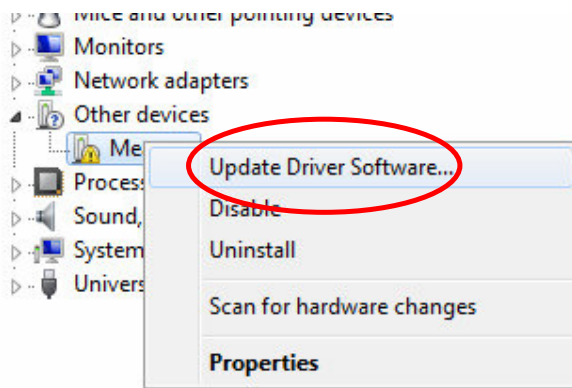
'Device Manager' will launch as below:



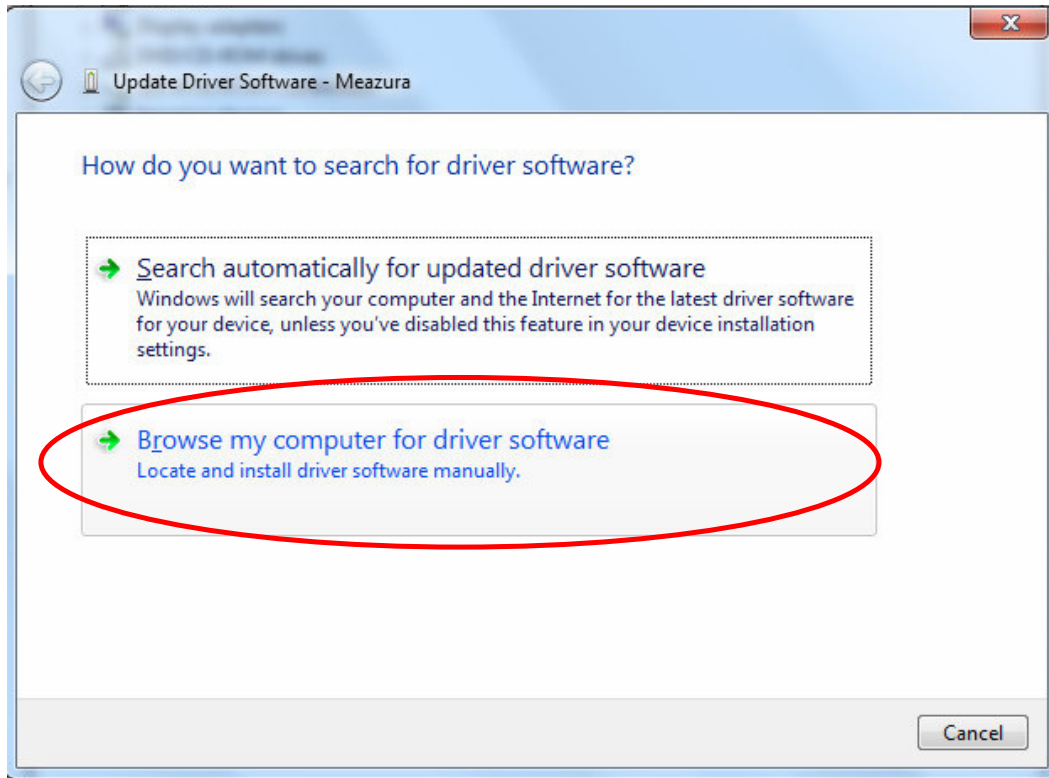
- 2) The USB driver is only active when the ACEECA device is trying to communicate with the PC. Hence you may have to try a USB Hotsync again to see the 'Device Manager' window below. You may have to open the 'Other devices' category by clicking on the little triangle icon to see the 'Meazura' device.



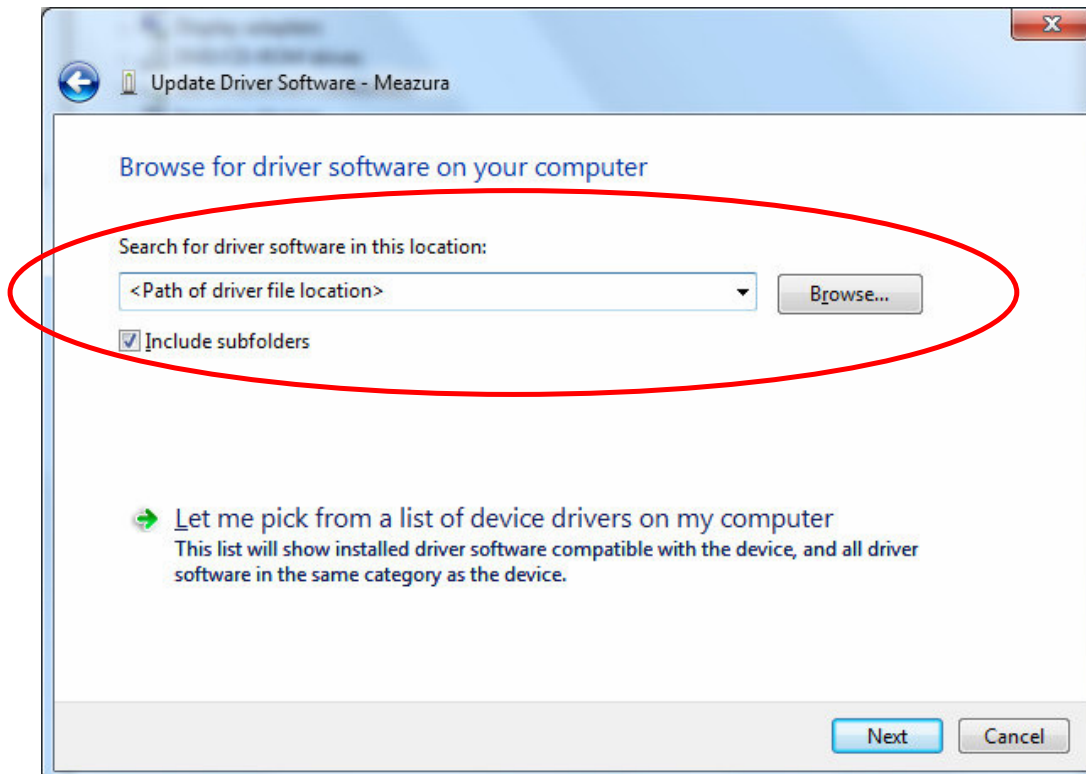
- 3) Right click on the 'Meazura' device and select 'Update Driver Software'.



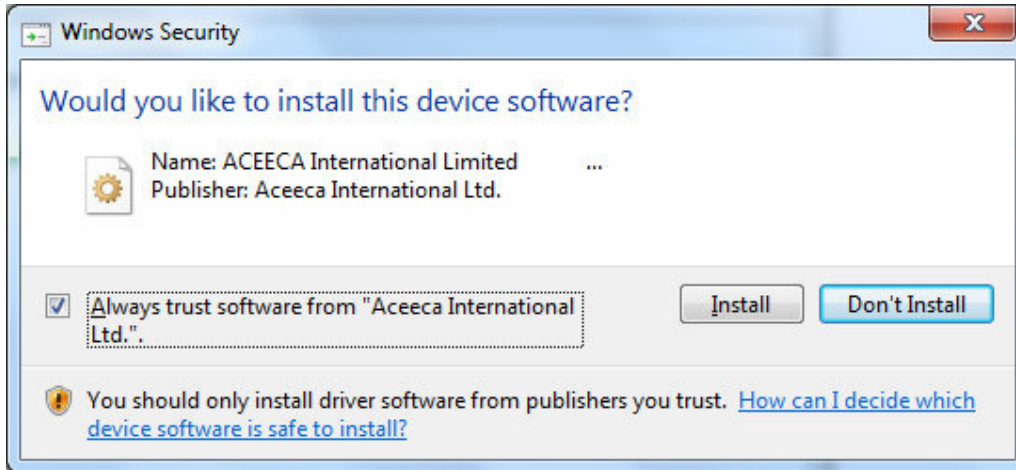
- 4) In the following dialog box select 'Browse my computer for driver software':



- 5) Enter path where you have unzipped the device driver files provided by Aceeca. Then select the 'Next' button to proceed.



- 6) You will see this Windows Security prompt asking you to accept software from Aceeca International Limited. Tick the check box as shown below and click on the 'Install' button. Windows will then install the device driver.



- 7) Once completed you will see the dialog box shown below. If the Aceeca handheld device has timed out waiting for a reply from the PC retry the HotSync connection once more. The driver should work with the existing Palm Desktop installation from that point forward.

